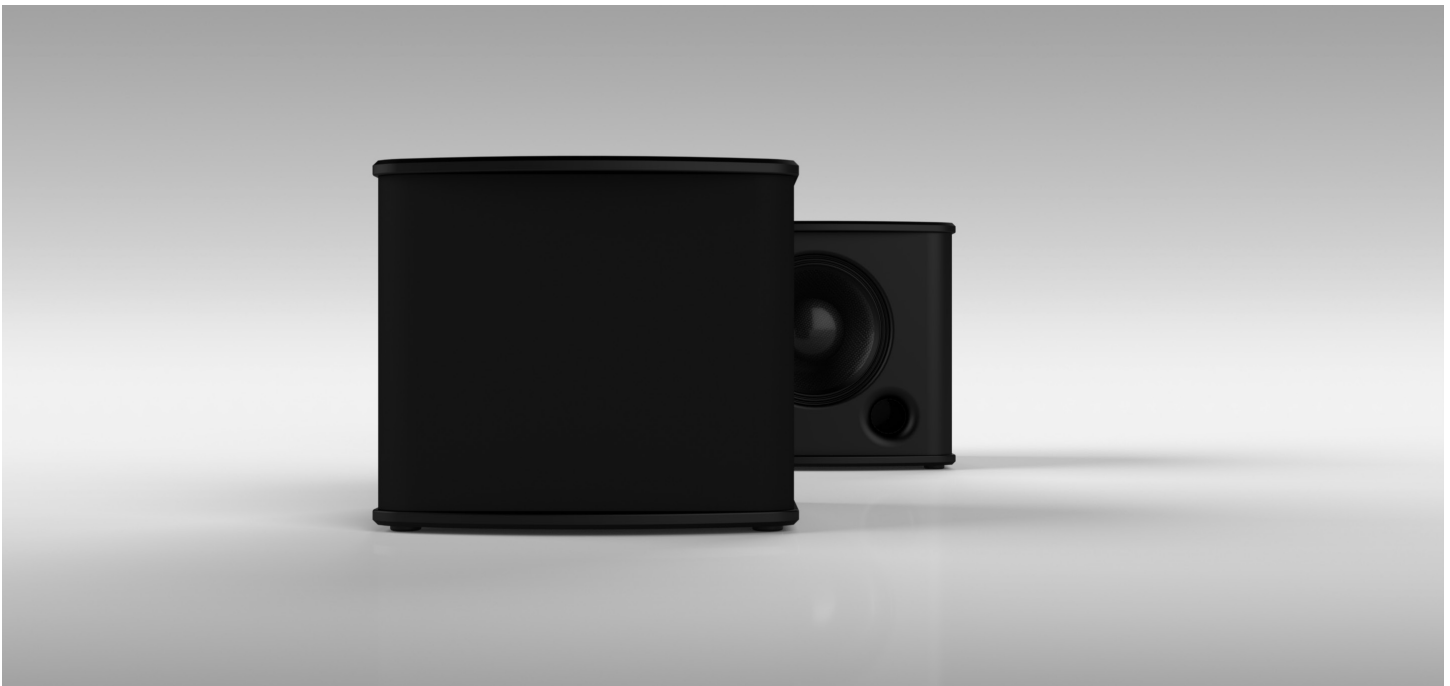


sub12 12" Passive Subwoofer



KEY FEATURES:

- 12" High-Output Professional-Grade In-Room Subwoofer
- 1 x 12" Theory High-Output Woofer with 3" Voice Coil
- 1000W Continuous Power Handling, 2000W Peak
- Maximum Output 122dB / 1m
- Highest Performance Available in its Class

OVERVIEW:

Today's high-resolution immersive audio soundtracks are bigger and more dynamic than ever before. Likewise, in high-end commercial environments, powerful, low-frequency audio reproduction is essential. To reproduce the weight and scale of today's content, Theory offers two passive in-room subwoofers with 12" and 15" woofers respectively.

The sub12 passive in-room subwoofer employs a high-power, 1000W, 3" voice-coil, long-throw 12" driver. With a maximum output of 122dB the bass the sub12 provides belies intuition, extending deeper than seems possible, with tight, tuneful expression. The sub12 offers the highest output available in its class.

From the outside, Theory subs exude high-quality. There is no need to hide them in the corners of the room or under a table (though you can). Like a high-end piece of furniture, Theory subwoofer cabinets are crafted from solid HDF with beautifully curved edges, and a high-gloss black finish.

The audio performance provided by Theory subwoofers is the only thing that trumps their aesthetics. Hyper detailed with extremely nuanced texture, Theory subs deliver low notes with a level of authority you can feel in your gut. The sub12 is the perfect in-room subwoofer complement to Theory's full range speakers to create a truly astonishing high-energy environment.

The performance and versatility of the sub12 must be experienced to be believed. Book a visit to the Theory Southern California Experience Center today to learn just how valuable this little loudspeaker will be in your system design toolbox.

APPLICATIONS:

Background and Foreground Business Music Systems

Bars and sports bars, restaurants, retail stores, hotels, houses of worship, corporate conference, screening rooms, lobbies, and casinos, etc.

Music and Video Post Production

Surround and Dolby Atmos mix rooms, music post production.

High Output Surround Sound Systems

Residential and commercial media rooms, gaming systems, executive boardrooms and conference rooms.

Two-channel Music Systems

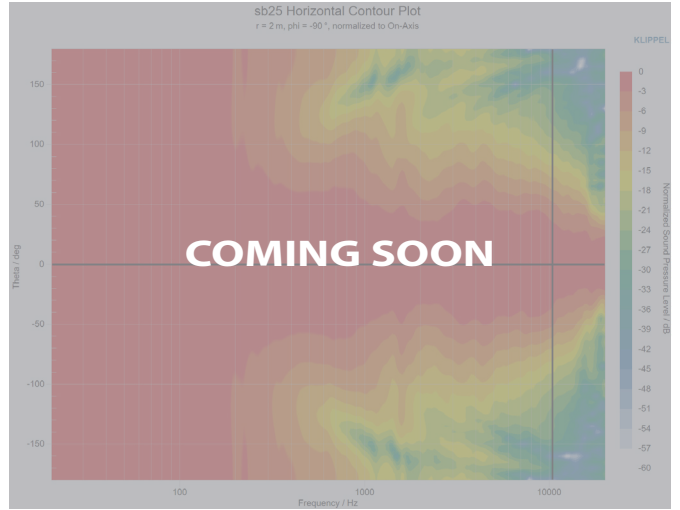
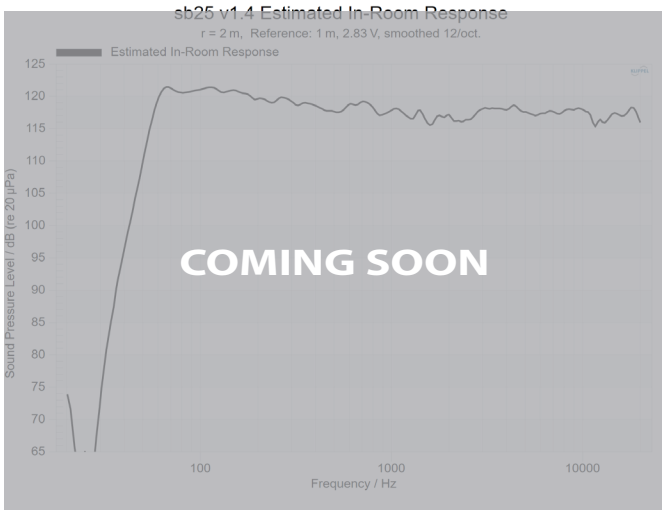
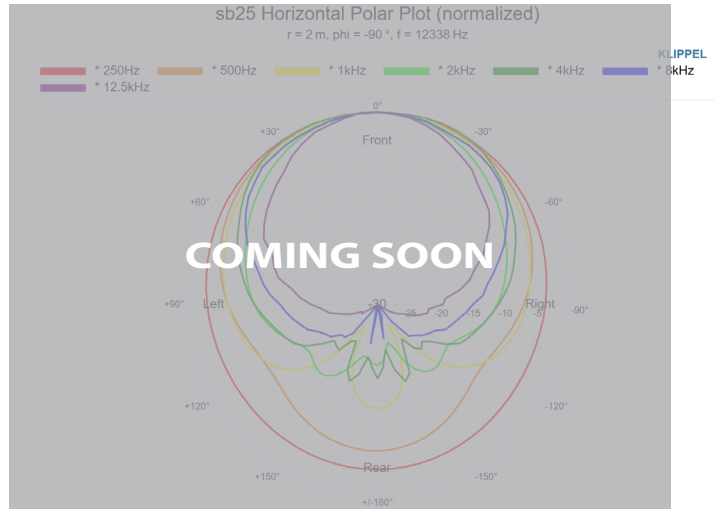
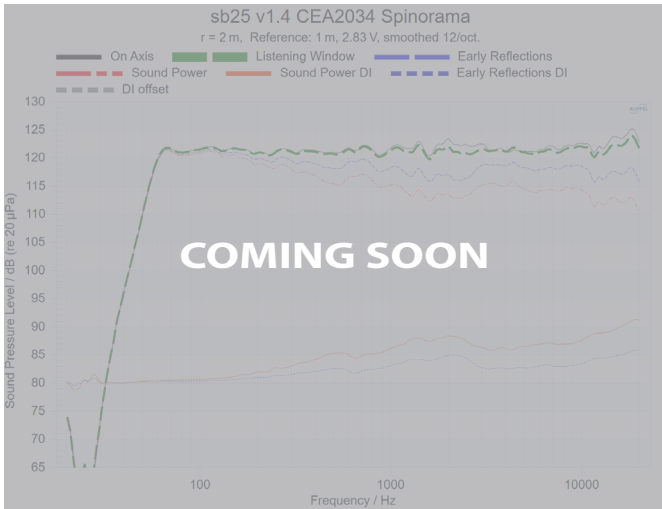
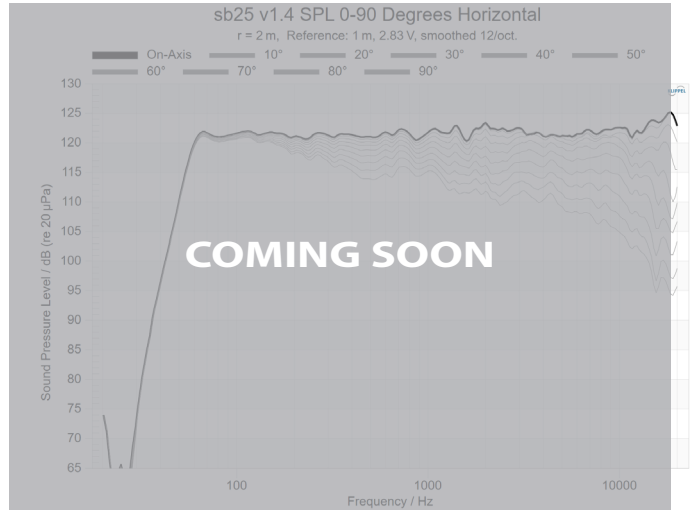
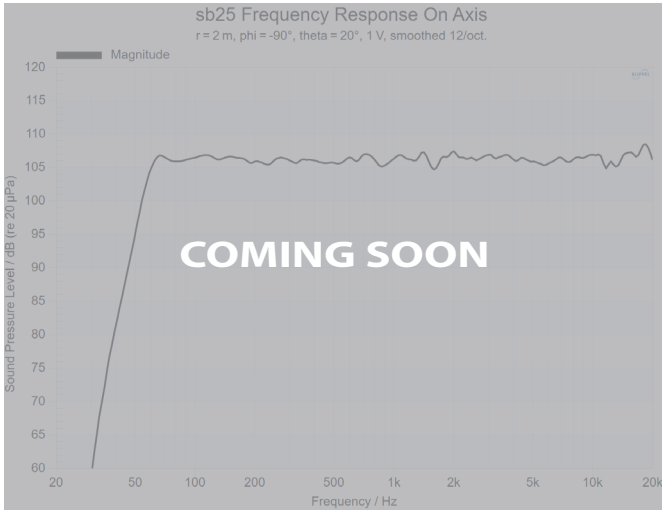
Premium residential and corporate stereo music systems, music and performance higher education.

sub12 Specifications¹

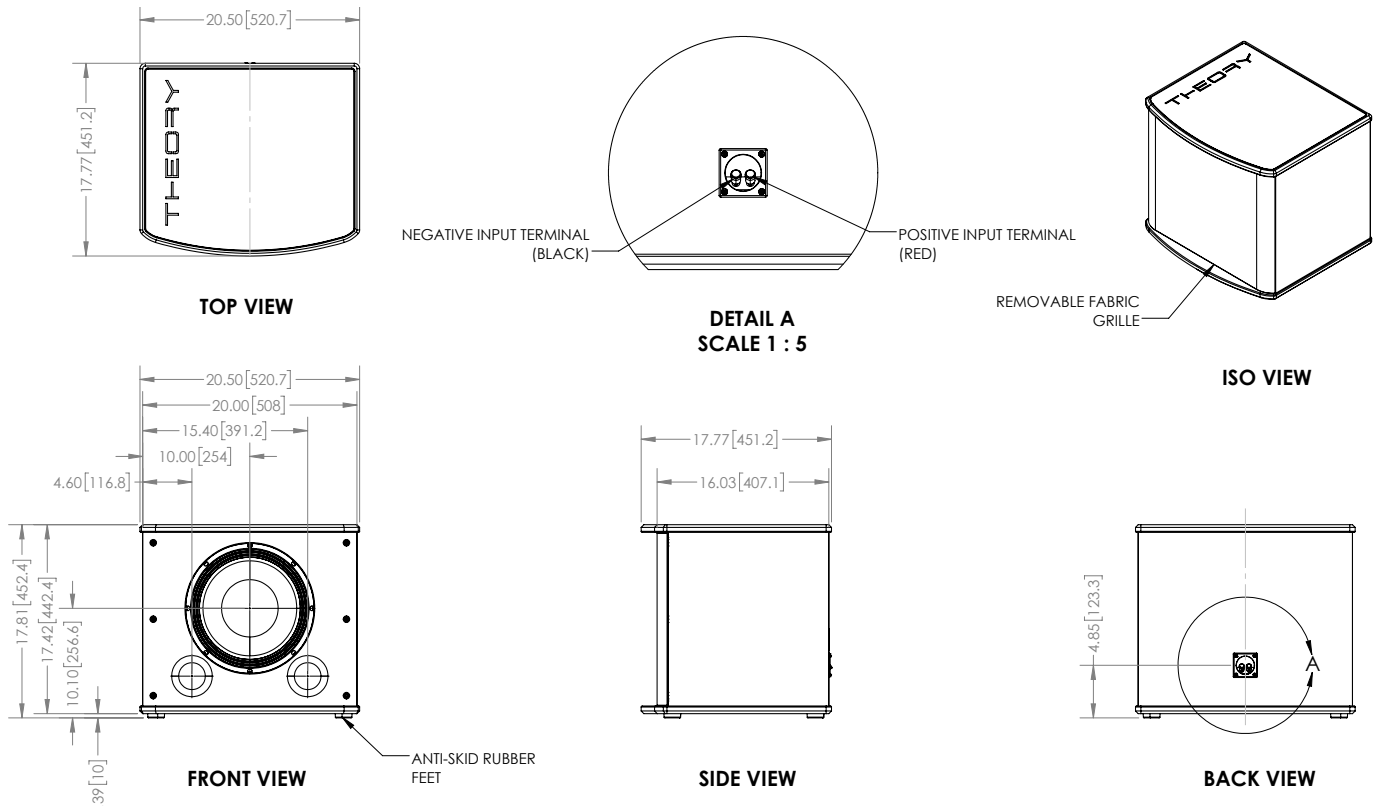
Description:	High Output 12" Passive Subwoofer System
Operation:	Passive, Requires One (1) Theory Loudspeaker Controller Amp Channel
DSP Requirements:	Requires Model-Specific Theory-Certified DSP Loudspeaker Processing
Drivers:	1 x 12" Theory High-Output Woofer with 3-Inch Voice Coil
Enclosure:	Painted HDF Enclosure, Fabric Grille
Terminals:	Twin Spring-Loaded Push Terminals
Outdoor Capability:	Indoor Use Only
Bandwidth:	22Hz - 125kHz, -6dB;
Sensitivity:	94dB SPL / 1m
Power Handling:	500W (AES); 1000W (Continuous); 2000W (Peak)
Minimum Recommended Power:	250W rms
Maximum Output:	122dB SPL / 1m (based on AES power rating) 128dB SPL / 1m (peak)
Nominal Impedance:	4-ohms
Colors:	Black
Dimensions:	17.8" H x 20.5" W x 17.8" D (452mm H x 521mm W x 452mm D)
Net Weight:	61 lbs. (27.7 kg)
Included Accessories:	Black Fabric Grille

¹ - Specifications when used with required Theory-Certified DSP loudspeaker processing. Failure to use Theory-Certified processing may cause damage, degrades performance and voids manufacturer warranty.

sub12 Measurements



sub12 Dimensions



sub12 Architectural Specifications

The loudspeaker shall be of the one-way, "subwoofer" type comprising a single free-standing, painted HDF enclosure containing one (1) 12" (305mm) paper cone, pleated cloth surround woofer with three-inch voice coil. It shall utilize an integral black fabric, acoustically-transparent, removable fabric grille. Frequency range shall be 22Hz – 125KHz (-6dB). Total power handling shall be 500 Watts (AES); 1000W continuous program. Sensitivity measured with 2.83 volts input at 1 meter on axis shall be 94dB. The loudspeaker shall operate via a single connected amplifier channel of suitable power and *must be combined with external Manufacturer-Certified DSP Processing*. The unit shall have a nominal input impedance of 4-ohms. The loudspeaker enclosure and baffle shall be constructed from machined high-density fiberboard material. The external wiring connectors shall be spring loaded and gold plated, and shall accept bare wire, single or dual banana-type connectors with 19 mm (3/4 in) spacing. External dimensions shall be 20.5" Width x 17.8" Depth 17.8" Height (521mm W x 452mm D x 452mm H). The total enclosure shall weigh 61 lbs. (27.7 kg) per unit. The loudspeaker shall be the Theory Audio Design sub12 Passive Subwoofer.

© 2023 THEORY AUDIO DESIGN, LLC. All rights reserved.

Theory Audio Design, LLC dba Theory Professional routinely engages in programs to improve, modify and revise its products without notice or obligation.

THEORY AUDIO DESIGN, LLC dba THEORY PROFESSIONAL

25741 Atlantic Ocean Drive, Suite B
Lake Forest, CA 92630

Tel: 949-245-0505
www.theoryaudiodesign.com