

sb25aw Weather Resistant Loudspeaker



KEY FEATURES:

- Extruded and Machined Aluminum Construction with Perforated Aluminum Grille Designed for Indoor and Outdoor Use
- 2 x 5" Theory Carbon Fiber LF Drivers
- 1 x 1.4" Theory AdvancedPoly™ High Frequency Compression Driver on 125° Axisymmetric Waveguide
- Multiple Mounts: Z-Clip Surface (incl.) and Yoke Mount Bracket (incl.), Pole, Vesa 75/100mm Mount Holes, Ceiling and wall Pan-and-Tilt Third-Party Mounts
- Maximum 117dB/1m from Enclosure Only 3.8" Deep
- Ultra-Wide 125° Conical Coverage (160°@10kHz, -12dB)
- 4-ohm or 70V/100V Operation

OVERVIEW:

The Theory sb25aw is an all-weather, 4-ohm or 70V/100V, version of the remarkable sb25 indoor surface mount loudspeaker.

Like the sb25, the sb25aw is a wide-bandwidth, high-output multi-use loudspeaker, perfect for restaurants, bars, hotels, retail stores, houses of worship and anywhere high-resolution, high-fidelity background or foreground sound is needed. The sb25aw incorporates a durable perforated aluminum grille, water-tight loudspeaker wire entry point, selectable hi-z or low-z operating modes, and ships with z-clip and yoke mounting brackets.

Capable of astonishing range and output, the 3.8" deep sb25aw is literally a jack of all trades and will have you re-thinking how you incorporate sound in your next high-value project.

With available optional Universal Mount Adapter, the sb25aw can go anywhere and look sleek and unobtrusive doing it. Its slender enclosure, clean aluminum grille, premium finish and gentle sculpted curves allow it to "disappear" into the architectural background, but look surprisingly handsome in environments where it's easily seen - stealth and pretty at the same time.

The performance and versatility of the sb25aw must be experienced to be believed. Book a visit to the Theory Southern California Experience Center today to learn just how valuable this little loudspeaker will be in your system design toolbox.

APPLICATIONS:

Background and Foreground Business Music Systems

Bars and sports bars, restaurants, hotel pool decks, outdoor shopping centers, courtyards, amusement parks, etc.

Open Air Surround Sound Systems

Outdoor entertainment-focused residential and commercial spaces, backyards, drive-ins, sports entertainment complexes.

Premium Outdoor and Marine

High-end courtyards, gardens, patios, and yachts - where premium sound is desired and architectural speakers are not an option.

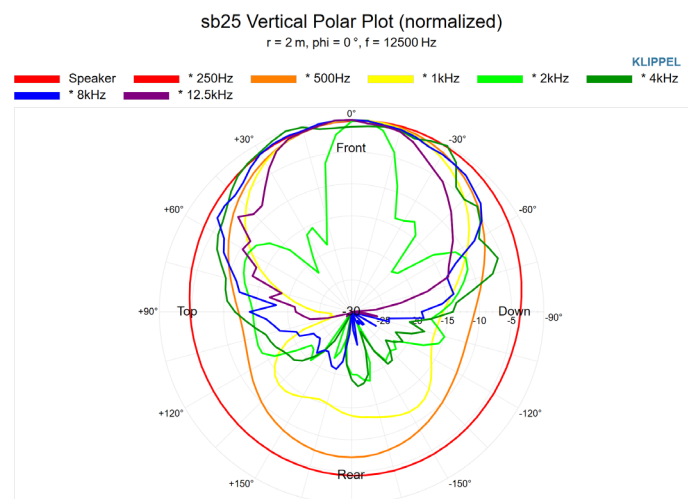
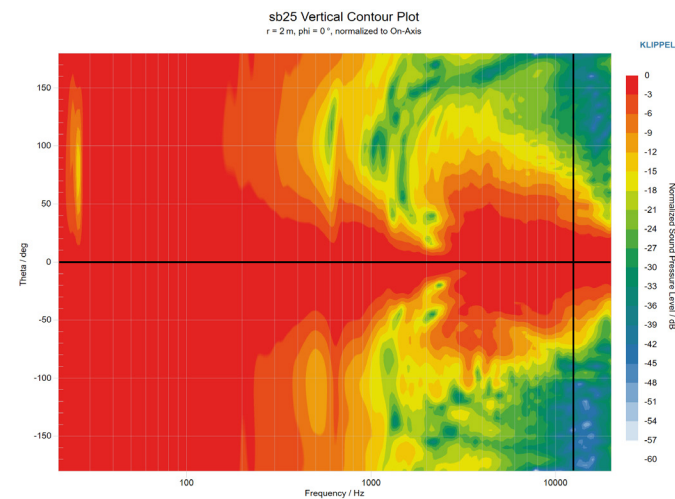
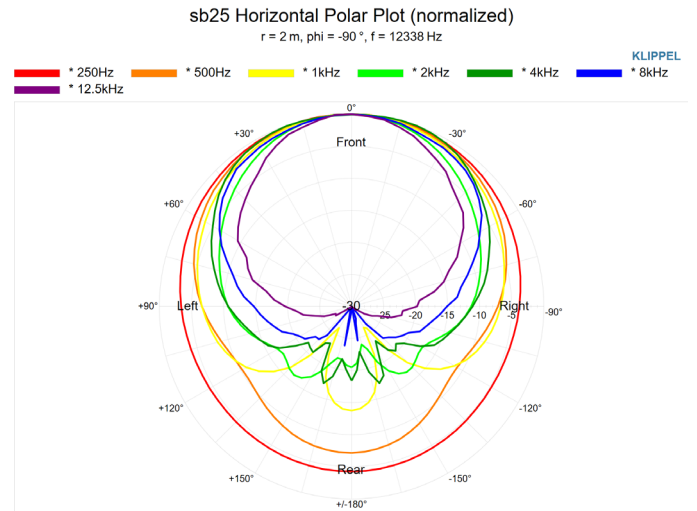
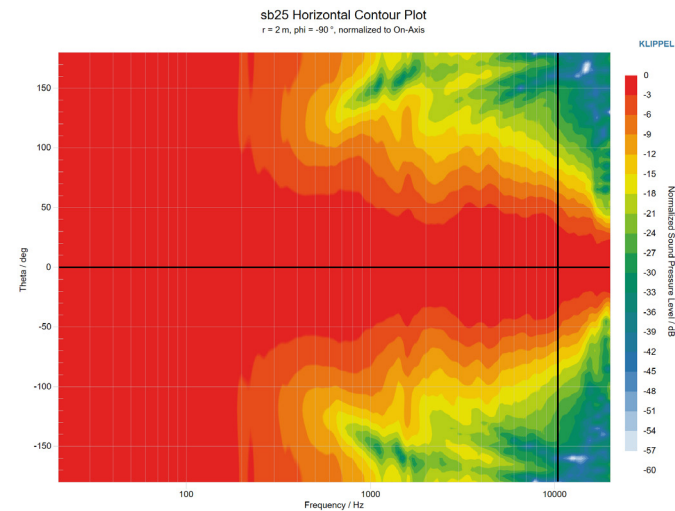
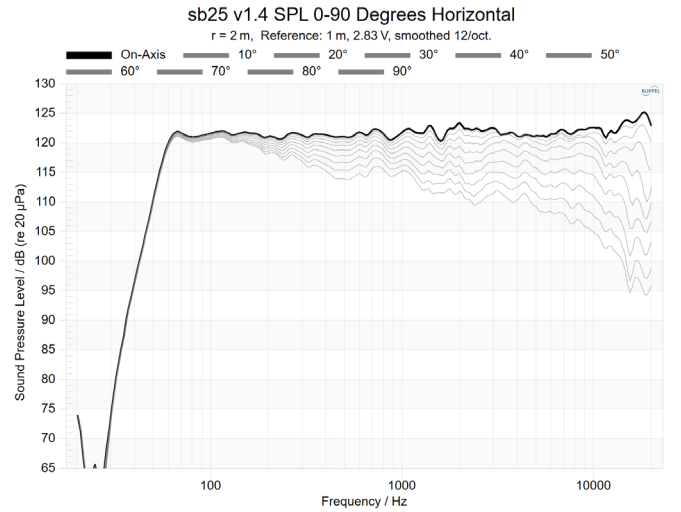
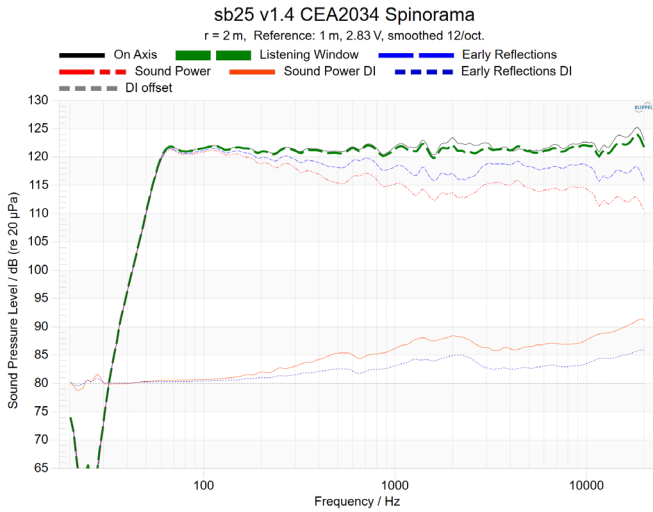
sb25aw Specifications¹

Description:	High-output Weather Resistant Surface Mount Loudspeaker
Operation:	Passive, Requires One (1) Theory Loudspeaker Controller Amp Channel
DSP Requirements:	Requires Model-Specific Theory-Certified DSP Loudspeaker Processing
Drivers:	2 x 5" Theory Carbon Fiber Low Frequency Drivers 1 x 1.4" Theory AdvancedPoly™ High Frequency Compression Driver
Enclosure:	Powder Coated Extruded and Machined Aluminum, Perforated Aluminum Grille
Terminals:	Euroblock Connector with Parallel Output
Outdoor Capability:	Indoor and Outdoor Use
Mounting Points:	Two Theory VersaSlot™ T-Slots Running Full Height with 4 x M5 Captive Nuts Included Z-Clip and Yoke Mount Brackets Optional Universal Mount Adapter, and Table Top Stand
Bandwidth:	51Hz - 23kHz, -6dB; 46Hz -24kHz, -10dB
Coverage:	125° Conical; 160° @ 10kHz, -12dB
Sensitivity:	94dB ² (LF); 108dB ² (HF) SPL/2.83V/1m
Power Handling:	200W (AES); 400W (Continuous); 800W (Peak)
Minimum Recommended Power:	50W rms
Maximum Output:	117dB SPL / 1m (based on AES power rating) 123dB SPL / 1m (peak)
Nominal Impedance:	4-ohms; Hi-Z (70V/100V) Selectable
Transformer Taps:	60W, 30W, 15W, (7.5W, 70V)
Colors:	Black
Dimensions:	21.5" H x 9.5" W x 3.8" D (546mm H x 241mm W x 97mm D)
Total Installed Depth (Z-clip Mount):	3.93" D (100mm) Including Z-Clip Mounting Brackets
Net Weight:	23 lbs. (10.4 kg)
Included Accessories:	Theory Z-Clip Mounting Brackets (male and female) for Flat Surface Mounting sb25aw Yoke Bracket
Optional Accessories:	sb25aw Waterproof Terminal Cover sb Table Top Stand Kit sb25 Universal Mount Adapter Kit: Mount Hole Patterns: 75mm and 100mm VESA Square, 2.0" x 4.25" 1/4"-20 and 2.75" x 5.0" 1/4"-20 Threads, Mount Hole for 1/2" Rigid Conduit Hub (1/2" conduit mount)
	Compatible Third Party Mounts: Omnimount 25.0W Wall Ball Mount, 25.0C Ceiling Ball Mount Adaptive Technologies Multimount MM-016-BT Wall Multi-Mount, MM-017 Wall Pan-Tilt, MM-018 Ceiling Pan-Tilt Mount

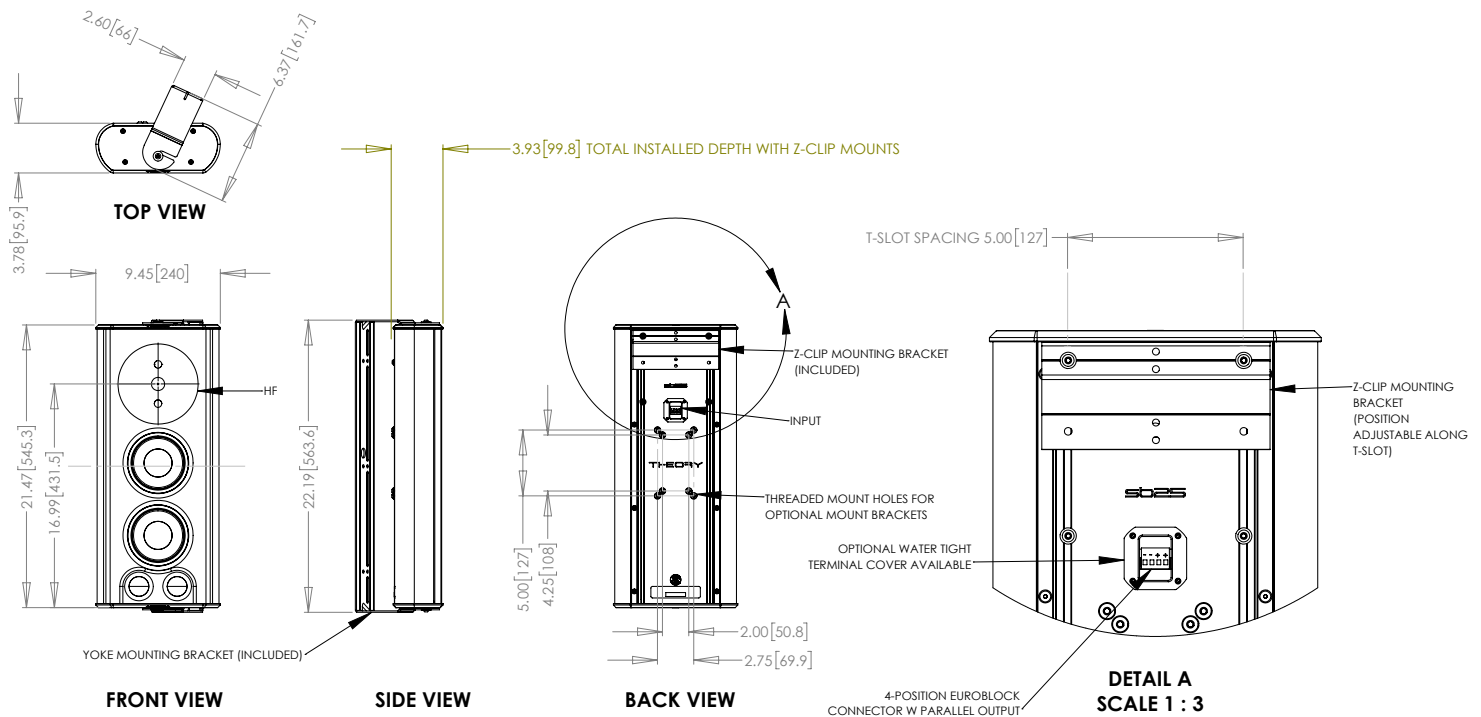
¹ - Specifications when used with required Theory-Certified DSP loudspeaker processing. Failure to use Theory-Certified processing may cause damage, degrades performance and voids manufacturer warranty.

² - The loudspeaker employs a passive internal crossover network so only one amp channel is needed to drive the unit. LF and HF sensitivity figures are shown separately because the network does not attenuate the HF signal in a traditional way, driver level balancing is accomplished in required DSP processing. This technique preserves some of the benefit of bi-amplification while only requiring a single amplifier channel.

sb25aw Measurements



sb25aw Dimensions



sb25aw Architectural Specifications

The loudspeaker shall be of the two-way type comprising a single surface mount, extruded and machined aluminum enclosure containing two (2) 5" (130mm) carbon fiber cone, butyl rubber surround low frequency transducers and one (1) 1.4" (35mm) Engineered Polymer Compression high frequency transducer. It shall utilize a perforated aluminum grille. Frequency range shall be 51Hz – 23KHz (-6dB). Total power handling shall be 200 Watts (AES); 400W continuous program. Sensitivity measured with 2.83 volts input at 1 meter on axis shall be 94dB. The loudspeaker shall operate via a single connected amplifier channel of suitable power via an internal passive crossover network and *must be combined with external Manufacturer-Certified DSP Processing*. The unit shall have a selectable nominal input impedance of 4-ohms or 70V/100V operation. The loudspeaker enclosure shall be constructed from extruded and machined aluminum. The baffle shall be ported and constructed from molded ABS. The external wiring connector shall be a Euroblock with parallel connection and shall accept up to 12 gauge bare wire. External dimensions shall be 9.5" Width x 3.8" Depth 21.5" Height (241mm W x 97mm D x 546mm H). The total enclosure shall weigh 23 lbs. (10.4 kg) per unit. The loudspeaker shall be the Theory Audio Design sb25aw Loudspeaker.

© 2023 THEORY AUDIO DESIGN, LLC. All rights reserved.

Theory Audio Design, LLC dba Theory Professional routinely engages in programs to improve, modify and revise its products without notice or obligation.

THEORY AUDIO DESIGN, LLC dba THEORY PROFESSIONAL

25741 Atlantic Ocean Drive, Suite B
 Lake Forest, CA 92630

Tel: 949-245-0505
 www.theoryaudiodesign.com