

sb25 Surface Mount Loudspeaker



KEY FEATURES:

- Extruded and Machined Aluminum Construction
- 2 x 5" Theory Carbon Fiber Low Frequency Drivers
- 1 x 1.4" Theory AdvancedPoly™ High Frequency compression driver on 125° axisymmetric waveguide
- Multiple Mounts: Z-clip Surface (incl.), Pole, Vesa 75/100mm Mount Holes, Ceiling and Wall Pan-and-Tilt Third-Party Mounts
- Maximum 117dB/1m from Enclosure Only 3.8" Deep
- Ultra-Wide 125° Conical Coverage (160°@10kHz, -12dB)
- Highest Performance Available in its Class

OVERVIEW:

The sb25 surface and pole mount multi-use loudspeaker is the "Swiss army knife" of installed loudspeakers with compact dimensions and jaw-dropping sonic performance. Its inert aluminum construction and tuned ports provide surprising low frequency performance with extended response and surprising dynamics. The sb25 offers the widest bandwidth and highest output available in its class.

The extruded aluminum construction allows the sb25 to achieve true full-range performance and high-output in a package that is only 3.8" deep (3.93" wall mounted including brackets). No other product of equal depth can come close to its performance.

With available optional Universal Mount Adapter, the sb25 can go almost anywhere and look sleek and unobtrusive doing it. Its slender enclosure, clean fabric grille, premium finish and gentle sculpted curves allow it to "disappear" into the architectural background, but look surprisingly handsome in environments where it's easily seen - stealth and pretty at the same time.

The performance and versatility of the sb25 must be experienced to be believed. Book a visit to the Theory Southern California Experience Center today to learn just how valuable this little loudspeaker will be in your system design toolbox.

APPLICATIONS:

Background and Foreground Business Music Systems

Bars and sports bars, restaurants, retail stores, hotels, houses of worship, corporate conference, screening rooms and lobbies, casinos, etc.

Music and Video Post Production

Surround and Dolby Atmos mix rooms where maximum output in compact depth is required, music post production.

High Output Surround Sound Systems

Residential and commercial media rooms, gaming systems, executive boardrooms.

Two-channel Music Systems

Premium residential and corporate stereo music systems, music and performance higher education.

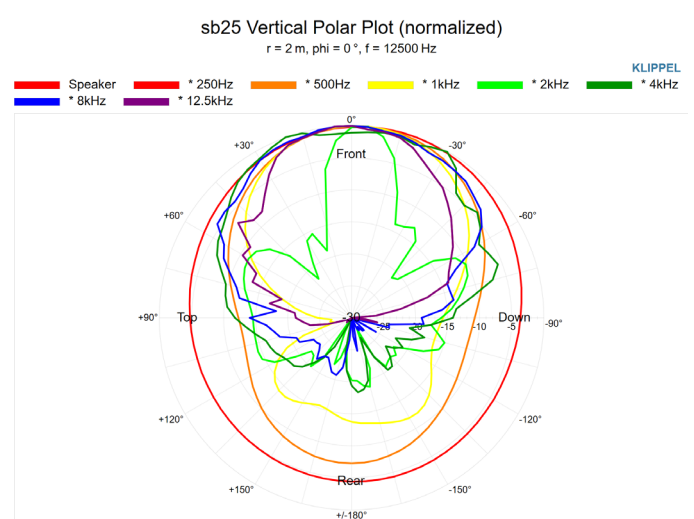
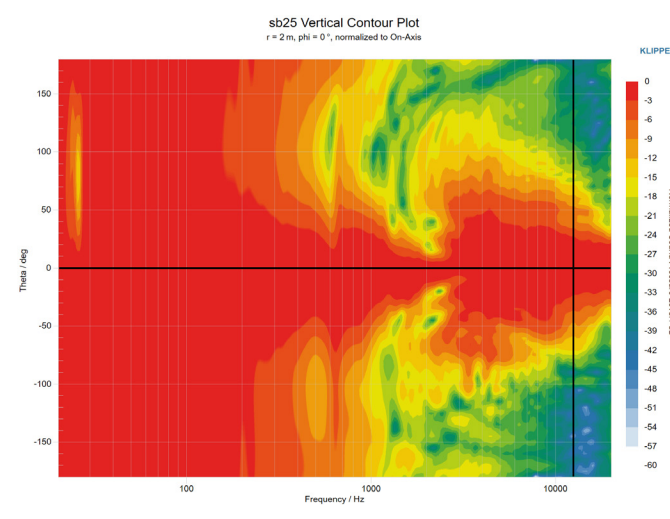
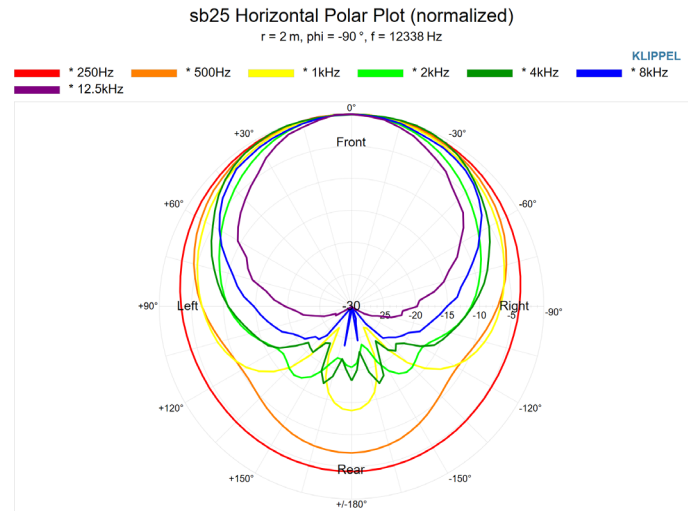
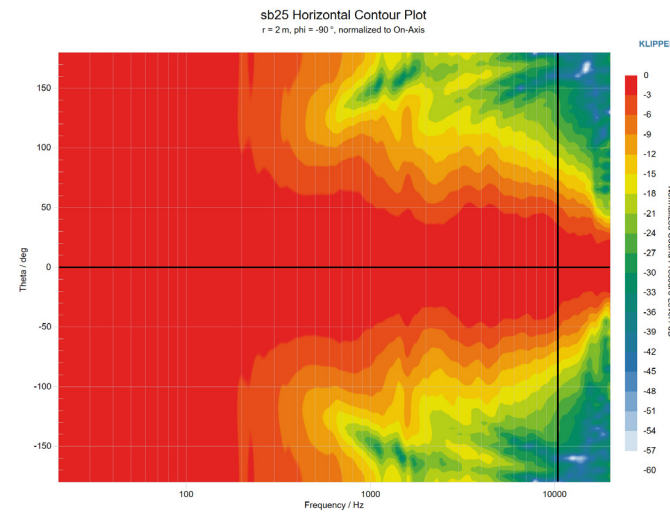
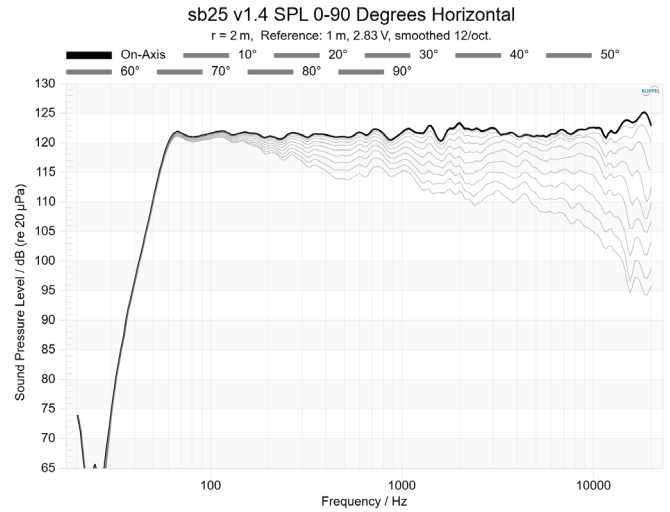
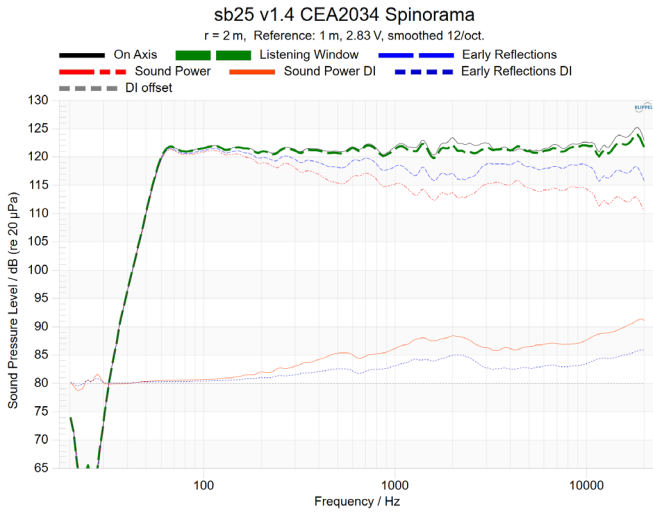
sb25 Specifications¹

| | |
|--|---|
| Description: | Compact Surface Mount Multipurpose High Output Loudspeaker System |
| Operation: | Passive, Requires One (1) Theory Loudspeaker Controller Amp Channel |
| DSP Requirements: | Requires Model-Specific Theory-Certified DSP Loudspeaker Processing |
| Drivers: | 2 x 5" Theory Carbon Fiber Low Frequency Drivers 1 x 1.4" Theory AdvancedPoly™ High Frequency Compression Driver |
| Enclosure: | Powder Coated and Anodized Extruded and Machined Aluminum, Fabric Grille |
| Terminals: | Twin Spring-Loaded Push Terminals |
| Outdoor Capability: | Indoor Use Only |
| Mounting Points: | Two Theory VersaSlot™ T-Slots Running Full Height with 4 x M5 Captive Nuts Optional Universal Mount Adapter, and Table Top Stand (see below) |
| Bandwidth: | 54Hz - 23kHz, -6dB; 49Hz -24kHz, -10dB |
| Coverage: | 125° Conical; 160° @ 10kHz, -12dB |
| Sensitivity: | 94dB ² (LF); 108dB ² (HF) SPL/2.83V/1m |
| Power Handling: | 200W (AES); 400W (Continuous); 800W (Peak) |
| Minimum Recommended Power: | 50W rms |
| Maximum Output: | 117dB SPL / 1m (based on AES power rating, LF sensitivity) 123dB SPL / 1m (peak) |
| Nominal Impedance: | 4-ohms |
| Colors: | Black |
| Dimensions: | 21.5" H x 9.5" W x 3.8" D (546mm H x 241mm W x 97mm D) |
| Total Installed Depth (Z-clip Mount): | 3.93" D (100mm) Including Z-Clip Mounting Brackets |
| Net Weight: | 23 lbs. (10.4 kg) |
| Included Accessories: | Theory Z-Clip Mounting Brackets (male and female) for Flat Surface Mounting |
| Optional Accessories: | sb Table Top Stand Kit sb25 Universal Mount Adapter Kit: Mount Hole Patterns: 75mm VESA Square 100mm VESA Square 2.0" x 4.25" 1/4"-20 Threads 2.75" x 5.0" 1/4"-20 Threads Mount Hole for 1/2" Rigid Conduit Hub (1/2" conduit mount) Compatible Third Party Mounts: Omnimount 25.0W Wall Ball Mount Omnimount 25.0C Ceiling Ball Mount Adaptive Technologies Multimount MM-016-BT Wall Multi-Mount Adaptive Technologies Multimount MM-017 Wall Pan-Tilt Adaptive Technologies Multimount MM-018 Ceiling Pan-Tilt |

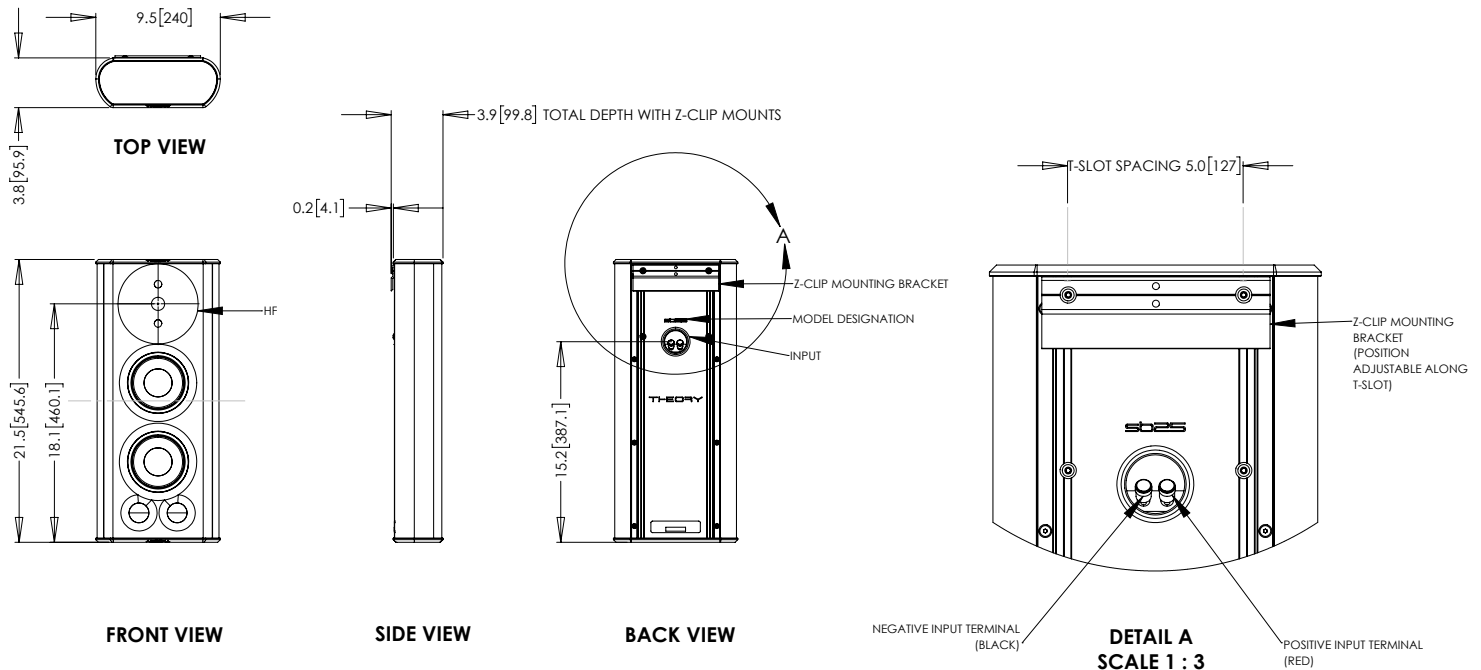
¹ - Specifications when used with required Theory-Certified DSP loudspeaker processing. Failure to use Theory-Certified processing may cause damage, degrades performance and voids manufacturer warranty.

² - The loudspeaker employs a passive internal crossover network so only one amp channel is needed to drive the unit. LF and HF sensitivity figures are shown separately because the network does not attenuate the HF signal in a traditional way, driver level balancing is accomplished in required DSP processing. This technique preserves some of the benefit of bi-amplification while only requiring a single amplifier channel.

sb25 Measurements



sb25 Dimensions



sb25 Architectural Specifications

The loudspeaker shall be of the two-way type comprising a single surface mount, extruded and machined aluminum enclosure containing two (2) 5" (130mm) carbon fiber cone, butyl rubber surround low frequency transducers and one (1) 1.4" (35mm) Engineered Polymer Compression high frequency transducer. It shall utilize an integral black fabric, acoustically-transparent, fabric grille. Frequency range shall be 54Hz – 23KHz (-6dB). Total power handling shall be 200 Watts (AES); 400W continuous program. Sensitivity measured with 2.83 volts input at 1 meter on axis shall be 94dB. The loudspeaker shall operate via a single connected amplifier channel of suitable power via an internal passive crossover network and *must be combined with external Manufacturer-Certified DSP Processing*. The unit shall have a nominal input impedance of 4-ohms. The loudspeaker enclosure shall be constructed from extruded and machined aluminum. The baffle shall be ported and constructed from machined high-density fiberboard material. The external wiring connectors shall be spring loaded and gold plated, and shall accept bare wire, single or dual banana-type connectors with 19 mm (3/4 in) spacing. External dimensions shall be 9.5" Width x 3.8" Depth 21.5" Height (240mm W x 95.9mm D x 545.6mm H). The total enclosure shall weigh 23 lbs. (10.4 kg) per unit. The loudspeaker shall be the Theory Audio Design sb25 Surface Mount Multi-Use Loudspeaker.

© 2023 THEORY AUDIO DESIGN, LLC. All rights reserved.

Theory Audio Design, LLC dba Theory Professional routinely engages in programs to improve, modify and revise its products without notice or obligation.

THEORY AUDIO DESIGN, LLC dba THEORY PROFESSIONAL

25741 Atlantic Ocean Drive, Suite B
 Lake Forest, CA 92630

Tel: 949-245-0505
www.theoryaudiodesign.com