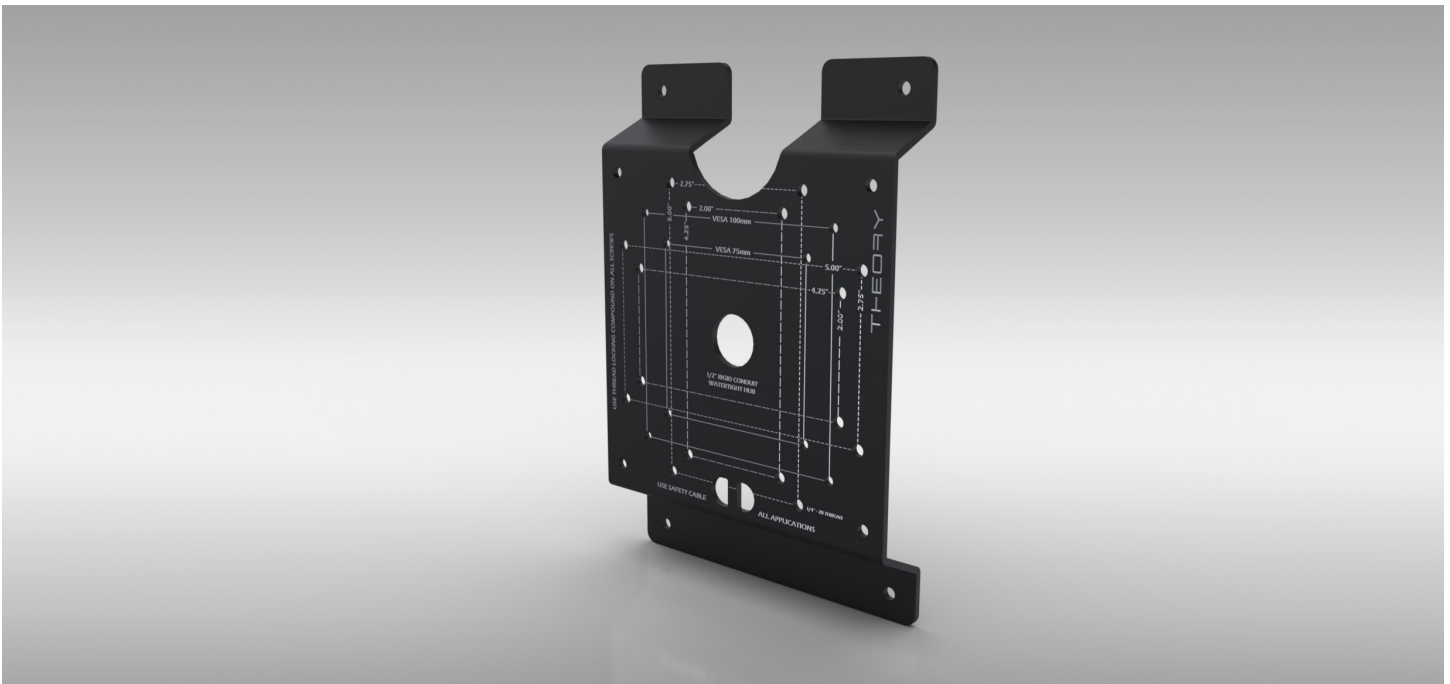


sb25-ADAPTER Universal Mount Adapter



DESCRIPTION:

Mounting Adapter for Theory sb25 and sb25aw Surface Mount Loudspeakers. Used to mount the sb25 almost anywhere and look sleek and unobtrusive doing it.

APPLICATIONS:

Pole from ceiling, pole from ground, onto any 75mm or 100mm VESA mount, and a number of pan-and-tilt and ball mounts for wall and ceiling mounting from Adaptive Technologies and Omnimount.

MOUNT HOLE PATTERNS:

75mm VESA Square

100mm VESA Square

2.0" x 4.25" 1/4"-20 Threads

2.75" x 5.0" 1/4"-20 Threads

Mount Hole for 1/2" Rigid Conduit Hub (1/2" Conduit Mount)

COMPATIBLE THIRD PARTY MOUNTS:

Omnimount:

25.0W Wall Ball Mount

25.0C Ceiling Ball Mount

Adaptive Technologies:

Multimount MM-016-BT Wall Multi-Mount

Multimount MM-017 Wall Pan-Tilt

Multimount MM-018 Ceiling Pan-Tilt

COLORS:

Black

DIMENSIONS:

9" H x 6" W x 1.13" D (229mm H x 152mm W x 29mm D)

WEIGHT:

1.8 lbs. (0.8 kg)